

# CLIMTEC

tuya<sup>®</sup>  
edition

Керуй свіжим повітрям легко!

## Recuperators of RD series tuya<sup>®</sup> edition

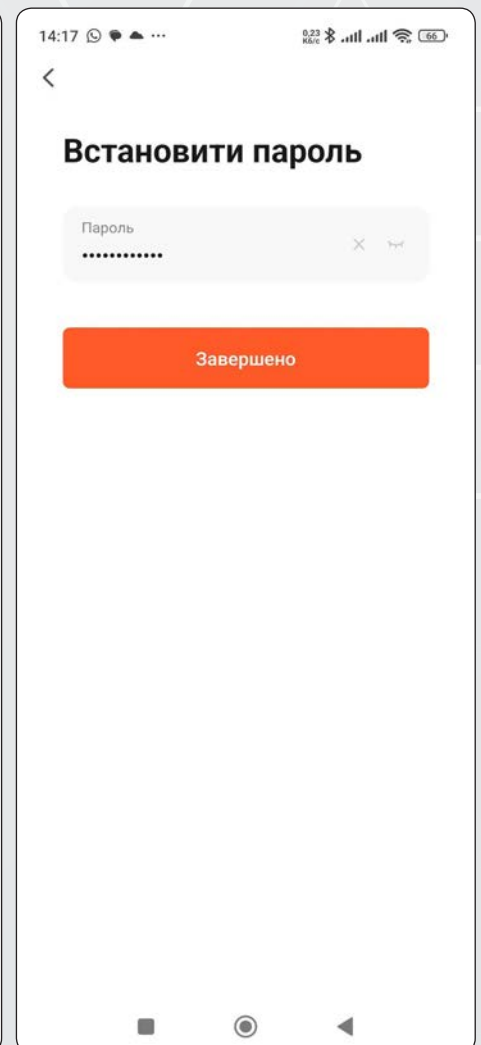
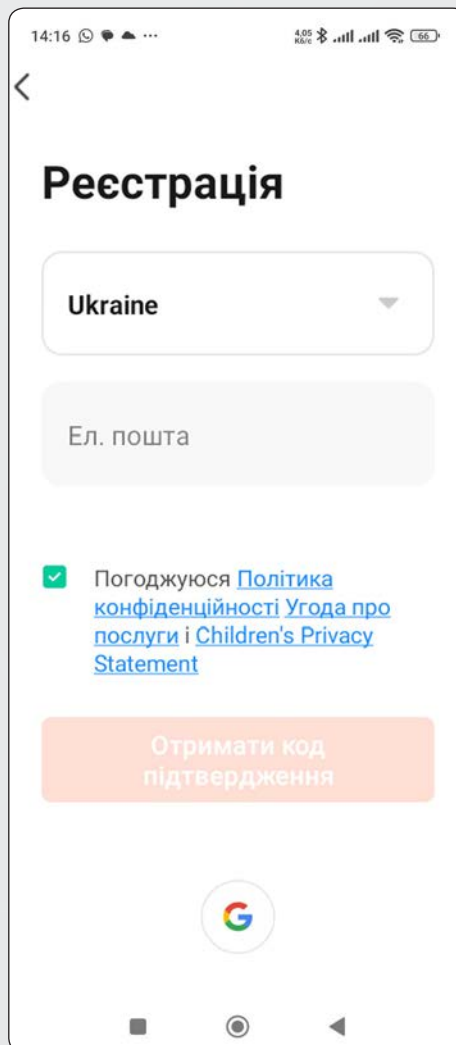
### CONNECTION GUIDELINES




## Guidelines for RD Tuya edition

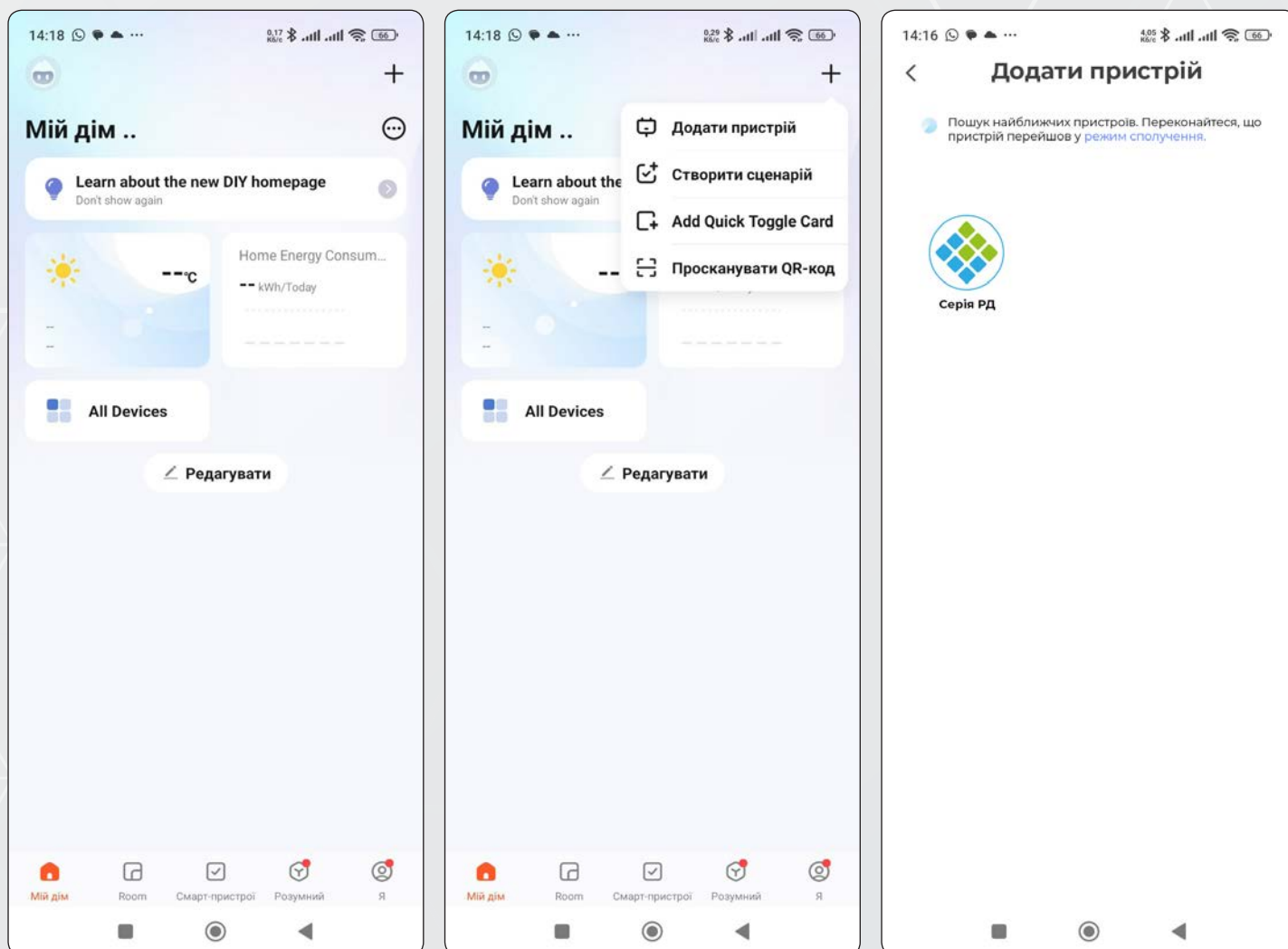
(First, download the Tuya app from Google Play or the App Store)

**1. Creating an Account.** In the downloaded app, tap “Sign Up.” In the window that opens, enter your details; after this, a confirmation will be sent to your phone and email. Enter the passwords in the corresponding fields in the app. If all the data is correct, the registration will be successful.

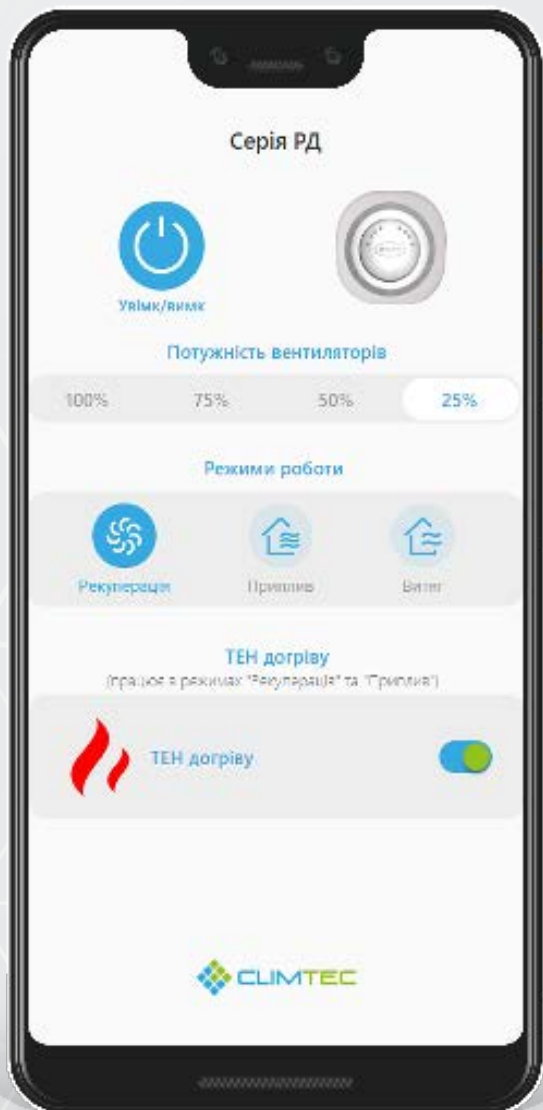


**2. Adding a Device.** On the remote control, with the recuperator turned off, hold down the “MODE” button  until the green indicators start flashing (the recuperator enters “pairing” mode).

In the Tuya app account, tap “+” in the upper right corner and select “Add Device.” The initial communication between the device and the phone is established via Bluetooth.



**3. Functions of the RD series in the app.** After successfully connecting the RD Tuya edition recuperator, the device is fully ready for use



**Ventilators Powers.**

This function controls ventilators operating power.

**Operating Modes.**

This function allows you to select the required operating mode (Recuperation, Supply, or Exhaust)..

**Heating Element.**

This function allows you to turn the heater element on or off. (It doesn't works by Exhaust mode).